



TRV-F

- always in front row !!

Thyregod TRV-F



The front mounted Thyregod TRV-F allows for interrow cultivation to be done manually. Large carrier wheels and stable cleaning sections provide optimum precision in manual operation.



Easy mount and dismounting

The carrier wheels and outrigger allows for safe and easy parking of the TRV-F, even on models with folding frames.



Specifications	TRV-F	
Working width	3 - 4 meters	6 meters
Foldable	No	Yes
Transport width	3 / 4 meters	2.95 meters
Rows	Max. 24 / 32 rows	Max. 48 rows
Row spacing	From 12.5cm	
Carrier wheels	2 pcs adjustable and swivel	
Seeding equipment	Yes, must be rear mounted on a 6 meters	
Standard Equipment		
Parallel mounted cleaning sections 150mm wide parallelograms with ball bearings Stepless adjustable depth wheels on cleaning sections L-Blades , S-Tines or combination Spring-loaded adjustable harrows Shieldplates		



Precision with high capacity

Large swivel carrier wheels provide a stable cultivator, even at high speeds. The oblong top link hole ensures that the unit always follows the terrain.

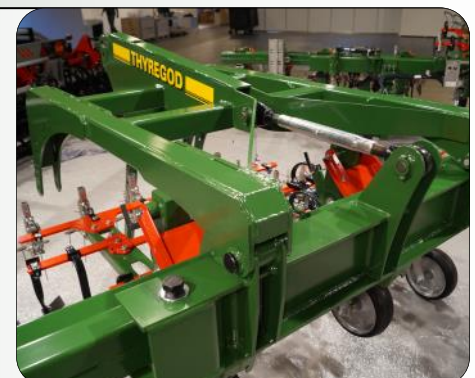
Thyregod TRV-F can of course be equipped with the same sections and equipment as the rear mounted Thyregod TRV cleaners.



Flexible and secure investment

The main frame of TRV-F is identical with the rear mounted TRV, making it possible to upgrade it to a rear mounted unit with automatic camera control.

TRV-F is available in working widths from 3 to 6 meters and with sections and tools in many configurations.



Thyregod A/S - Borberggade 46 - DK-7323 Give - Tlf. +45 7573 4099
thyregod@thyregod.com - www.thyregod.com